
SYNOPTIC COMMENTS

A FRONTAL SYSTEM PUSHING OFF THE EASTERN COAST OF THE USA WILL PROVIDE AREAS OF RAIN AND MIST FOR YOUR DEPARTURE FROM KTEB. VISIBILITIES WILL BE REDUCED AT TIMES, AND MAY CAUSE DELAYS IN YOUR SCHEDULED DEPARTURE TIME OF 2000 UTC. ALSO IN CONJUNCTION WITH THIS SYSTEM, LOOK FOR AREAS OF ISOLATED MODERATE TURBULENCE DURING YOUR CLIMB TO FL410. EXPECT AREAS OF ISOLATED MINOR TURBULENCE ENROUTE TO EINN DUE TO SEVERAL UPPER LEVEL JETS LOCATED IN THE NORTH ATLANTIC, AS INDICATED ON THE SIG CHARTS PROVIDED. FAIR WEATHER CONDITIONS ARE EXPECTED FOR YOUR ARRIVAL INTO EINN, AS WELL AS FOR YOUR SCHEDULED DEPARTURE ON TO LIRA. ENROUTE WEATHER TO LIRA IS EXPECTED TO BE FAIR AT YOUR PLANNED ALTITUDE OF FL410. ISOLATED AREAS OF LIGHT RAIN AND/OR MIST MAY BE PRESENT FOR YOUR SCHEDULED ARRIVAL IN LIRA AT APPROXIMATELY 0650 UTC. ALTHOUGH VISIBILITIES MAY BE REDUCED AT TIMES, DELAYS ARE NOT EXPECTED AT THIS TIME.

PLEASE BE ADVISED THAT WE WILL SEND A TEXT WEATHER UPDATE TO THE HANDLING AGENT IN EINN FOR YOU TO PICK UP PRIOR TO CONTINUING ON TO LIRA.

NOTE: SEVERE TURBULENCE, SEVERE ICING, LOW LEVEL WIND SHEAR, LARGE HAIL AND HEAVY RAIN CAN BE EXPECTED IN OR NEAR THUNDERSTORMS.

OPERATING TERMINAL FORECASTS

KTEB 101440Z 1015/1112 10010KT 4SM -RA BR OVC012 WS020/15055KT
TEMPO 1015/1017 2SM -RA BR OVC008
FM101700 10010KT 2SM -RA BR OVC007 WS020/14045KT
FM102200 11011KT 1SM -RA BR OVC004 WS020/15050KT
FM110400 12012KT 1 1/2SM -RA BR OVC007 WS020/16050KT
FM110700 13018KT 3/4SM RA BR OVC004 WS020/16060KT

EINN 101100Z 1012/1112 27020G32KT 9999 FEW020 SCT035
TEMPO 1012/1020 -SHRA SCT018CB BKN020
BECMG 1017/1019 28017KT
BECMG 1021/1024 25010KT
BECMG 1100/1103 21007KT
BECMG 1103/1106 13007KT SCT012 BKN020
PROB40
TEMPO 1106/1112 5000 RA BKN010

LIRA 101100Z 1012/1112 30010KT 9999 SCT020
BECMG 1018/1021VRB05KT
TEMPO 1103/1107 5000 BR SCT005
BECMG 1110/1112 24008KT

EIDW 101100Z 1012/1112 27025G37KT 9999 FEW020 SCT030
TEMPO 1012/1014 27028G43KT
TEMPO 1012/1020 -SHRA SCT018CB
BECMG 1016/1019 26017G29KT
BECMG 1021/1024 24011KT
BECMG 1109/1111 19010KT
PROB40
TEMPO 1109/1112 5000 RA BKN010

LIRN 101100Z 1012/1112 24010KT 9999 SCT030
BECMG 1016/1018 VRB05KT
TEMPO 1100/1106 4000 BR

ENROUTE AND ETP TERMINAL FORECASTS

CYQX 101138Z 1012/1112 36007KT P6SM SCT020
TEMPO 1012/1016 P6SM -SN BKN020
FM101600 01007KT P6SM SCT010
TEMPO 1016/1023 BKN010
BECMG 1019/1021 VRB03KT
FM110300 VRB03KT P6SM BKN010
BECMG 1108/1110 18005KT
BIKF 101433Z 1015/1115 02025KT 9999 FEW020 SCT040
TEMPO 1015/1115 3000 SHSN BKN010
EINN 101100Z 1012/1112 27020G32KT 9999 FEW020 SCT035
TEMPO 1012/1020 -SHRA SCT018CB BKN020
BECMG 1017/1019 28017KT
BECMG 1021/1024 25010KT
BECMG 1100/1103 21007KT
BECMG 1103/1106 13007KT SCT012 BKN020
PROB40
TEMPO 1106/1112 5000 RA BKN010

CURRENT CONDITIONS, VALID AS INDICATED

KTEB 101651Z 10009KT 4SM BR OVC012 08/04 A3017 RMK AO2 SLP215 T00780044
KTEB 101551Z 05006KT 3SM BR OVC008 06/03 A3020 RMK AO2 SFC VIS 5 SLP227
T00610033

EINN 101630Z 28015KT 9999 FEW022 SCT050 BKN200 08/03 Q1013 NOSIG
EINN 101530Z 28016KT 9999 FEW015 SCT050 BKN200 09/04 Q1012 NOSIG

LIRA 101645Z 28006KT 250V310 CAVOK 10/01 Q1022
LIRA 101545Z 06007KT CAVOK 12/01 Q1022

EIDW 101630Z 27026KT 9999 SCT022 SCT040 BKN200 07/00 Q1008 NOSIG
EIDW 101530Z 28026G36KT 9999 SCT020 BKN040 08/01 Q1007 NOSIG

LIRN 101650Z 28008KT CAVOK 12/01 Q1023
LIRN 101550Z 25007KT CAVOK 11/M01 Q1023

CYQX 101600Z 06003KT 20SM FEW200 OVC260 M05/M13 A3079 RMK CS2CI4 SLP439
CYQX 101500Z 32003KT 20SM FEW023 BKN200 BKN260 M06/M12 A3082 RMK CF1CS5CI1 TR
CF SLP448

BIKF 101630Z 01023KT 9999 VCSH DRSN FEW020CB BKN035 M04/M10 Q1001 02720055
BIKF 101530Z 02020KT 9999 VCSH -BLSN FEW016CB SCT029 BKN036 M05/M10 Q1001

SIGMETS VALID ENROUTE FOR YOUR FLIGHT TIME

WVIL31 BICC 101135
BIRD SIGMET 03 VALID 101200/101800 BIRK-
EXERCISE VOLCICE
BIRD REYKJAVIK CTA VA MT HEKLA LOC N6359 W01938 VA CLD FCST FCST
1800Z VA CLD APRX SFC/FL200 N64 W020 - N64 W009 - N062 W006 - N62
W015 - N061 W020 - N61 W025 - N6330 W02200 - N64 W020 CNL SIGMET 02
100900/101400
EXERCISE EXERCISE EXERCISE=

WVIL31 BICC 101146
BIRD SIGMET 04 VALID 101200/101800 BIRK-
EXERCISE VOLCICE
BIRD REYKJAVIK CTA VA MT HEKLA LOC N6359 W01938 VA CLD FCST FCST
1800Z VA CLD APRX FL200/550 N64 W020 - N6530 W00200 - N6430 W00300 -
N6330 W00600 - N62 W017 - N63 W021 - N64 W020
EXERCISE EXERCISE EXERCISE=

WVIY32 LIIB 101205
LIRR SIGMET 03 VALID 101235/101635 LIMM-
LIRR ROMA FIR FBL VA (LAST OBS AT 100505Z BY LICZ) EXT 10 NM E OF
ETNA FL070/110 MOV SE 10 KT=

WVIY32 LIIB 101605
LIRR SIGMET 04 VALID 101635/102235 LIMM-
LIRR ROMA FIR FBL VA (LAST OBS AT 100505Z BY LICZ) EXT 10 NM E OF
ETNA FL070/110 MOV SSE 10 KT=

AIRMETS VALID ENROUTE FOR YOUR FLIGHT TIME

WAUS41 KPCI 101445
BOSS WA 101445
AIRMET SIERRA UPDT 2 FOR IFR AND MTN OBSCN VALID UNTIL 102100
AIRMET IFR...ME NH VT MA RI CT NY LO NJ PA OH LE WV MD DC DE VA
AND CSTL WTRS
FROM 70NW PQI TO 30NNE PQI TO 30SSW BGR TO 60E ACK TO 20NE ECG
TO HNV TO HNN TO CVG TO FWA TO DXO TO 40SSE ECK TO YOW TO YSC TO
70NW PQI
CIG BLW 010/VIS BLW 3SM PCPN/BR. CONDS CONTG BYD 21Z THRU 03Z.
OTLK VALID 2100-0300Z...IFR ME NH VT MA RI CT NY LO NJ PA OH LE
WV MD DC DE VA AND CSTL WTRS
BOUNDED BY 80NW PQI-30NNE PQI-20S HUL-110SE BGR-100E ACK-70E ORF-
20NE ECG-HNV-HNN-CVG-FWA-DXO-YOW-YSC-80NW PQI
CIG BLW 010/VIS BLW 3SM PCPN/BR. CONDS CONTG THRU 03Z.

WAUS41 KPCI 101624 AAA
BOST WA 101624 AMD
AIRMET TANGO UPDT 5 FOR TURB AND LLWS VALID UNTIL 102100
AIRMET TURB...ME NH VT MA RI CT NY LO NJ PA OH LE WV MD DC DE VA
AND CSTL WTRS
FROM 70NW PQI TO 30NNE PQI TO 50WSW YSJ TO 200SE ACK TO 160SE
SIE TO 20NE ECG TO 40SSW PSK TO 50W YYZ TO YOW TO YSC TO 70NW PQI
MOD TURB BLW 140. CONDS CONTG BYD 21Z THRU 03Z.
LLWS POTENTIAL...NH VT MA RI CT NY LO NJ PA MD DC DE VA AND CSTL
WTRS
BOUNDED BY 20W PLB-30E ACK-100SSE ACK-120ESE SIE-120SE SIE-20N
ORF-30SSW HAR-40NNW SYR-20W PLB
LLWS EXP. CONDS CONTG BYD 21Z THRU 03Z.
OTLK VALID 2100-0300Z
AREA 1...TURB NH VT MA CT NY LO NJ PA OH LE WV MD DC DE VA AND
CSTL WTRS
BOUNDED BY YSC-20S BDL-160SE SIE-20NE ECG-HNV-HNN-CVG-FWA-DXO-
YOW-YSC
MOD TURB BTN 140 AND FL400. CONDS CONTG THRU 03Z.
AREA 2...TURB WV VA NC SC GA
BOUNDED BY HNN-30WSW CSN-20NNW RDU-IRQ-20SSE LGC-GQO-HNV-HNN
MOD TURB BLW 100. CONDS DVLPG 21-00Z. CONDS CONTG THRU 03Z.

WAUS41 KPCI 101624 AAA
BOST WA 101624 AMD
AIRMET TANGO UPDT 5 FOR TURB AND LLWS VALID UNTIL 102100
AIRMET TURB...NY LO NJ PA OH LE WV MD DC DE VA AND CSTL WTRS
FROM 50WSW YOW TO 30E JFK TO 40SE CYN TO 80E ORF TO 30ENE ECG TO
HMV TO HNN TO CVG TO FWA TO DXO TO YYZ TO 50WSW YOW
MOD TURB BTN 140 AND FL400. CONDS CONTG BYD 21Z THRU 03Z.
OTLK VALID 2100-0300Z
AREA 1...TURB NH VT MA CT NY LO NJ PA OH LE WV MD DC DE VA AND
CSTL WTRS
BOUNDED BY YSC-20S BDL-160SE SIE-20NE ECG-HMV-HNN-CVG-FWA-DXO-
YOW-YSC
MOD TURB BTN 140 AND FL400. CONDS CONTG THRU 03Z.
AREA 2...TURB WV VA NC SC GA
BOUNDED BY HNN-30WSW CSN-20NNW RDU-IRQ-20SSE LGC-GOO-HMV-HNN
MOD TURB BLW 100. CONDS DVLPG 21-00Z. CONDS CONTG THRU 03Z.

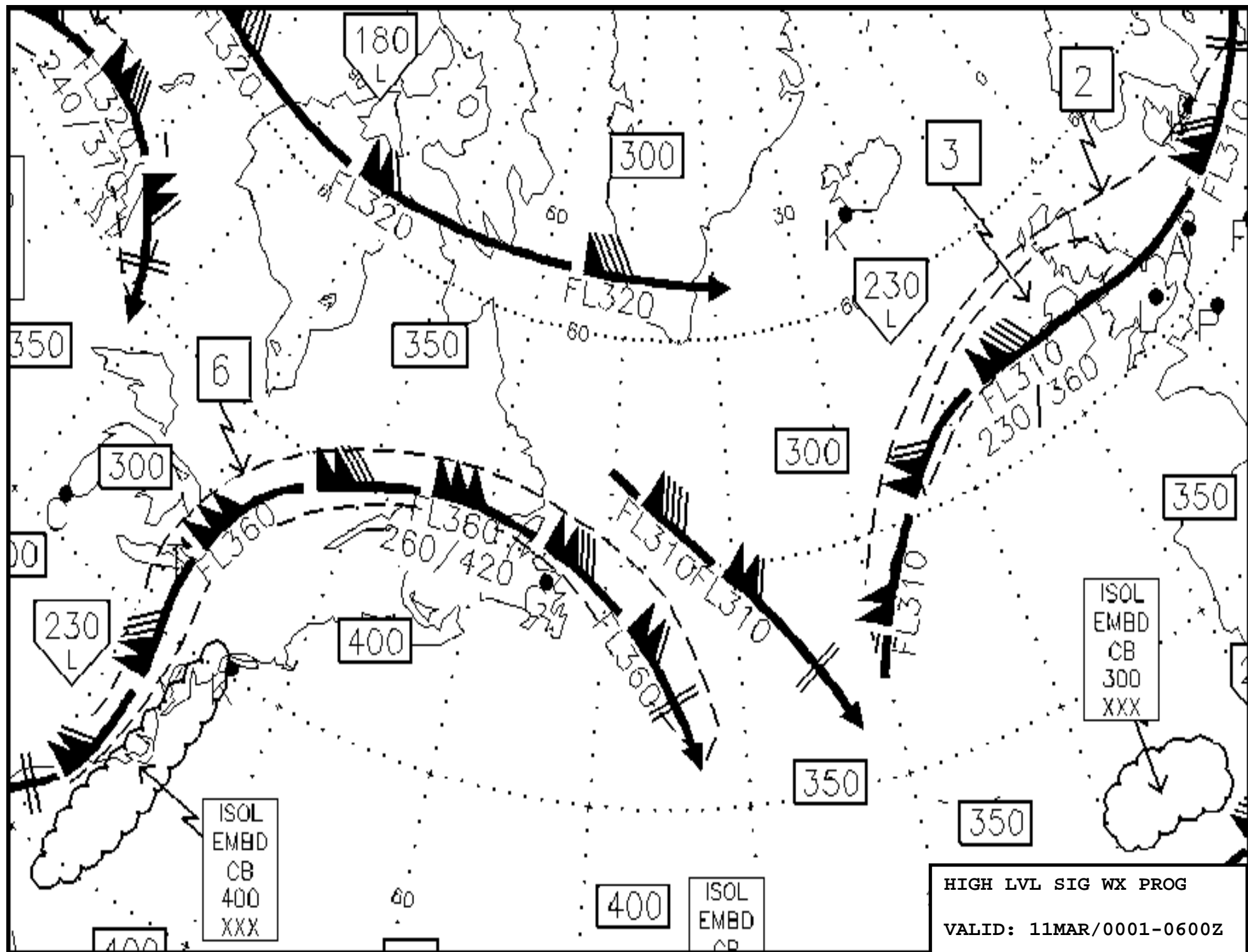
WAUS41 KPCI 101445
BOSZ WA 101445
AIRMET ZULU UPDT 3 FOR ICE AND FRZLVL VALID UNTIL 102100
AIRMET ICE...ME NH VT MA RI CT NY LO NJ PA AND CSTL WTRS
FROM 30NE MSS TO 50SW MPV TO 20NNW ENE TO 70SE MLT TO 140E ACK TO
ACK TO 60SW ACK TO 20WNW SAX TO 20NW HAR TO 40W EMI TO 80ENE YYZ
TO 30NE MSS
MOD ICE BTN FRZLVL AND FL210. FRZLVL 040-080. CONDS CONTG BYD 21Z
THRU 03Z.

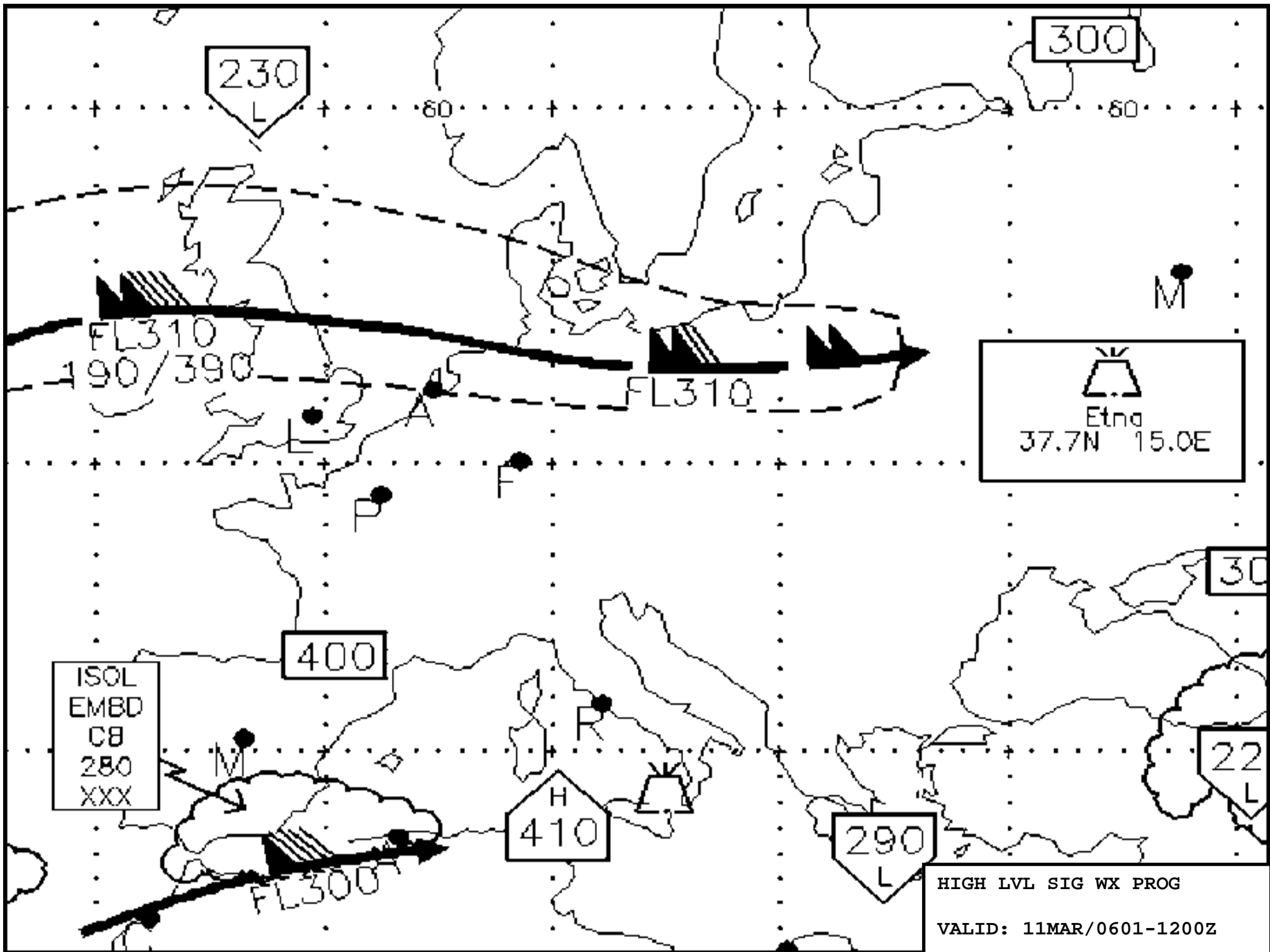
ACTIVE AREA PIREPS (200NM SEARCH RADIUS)

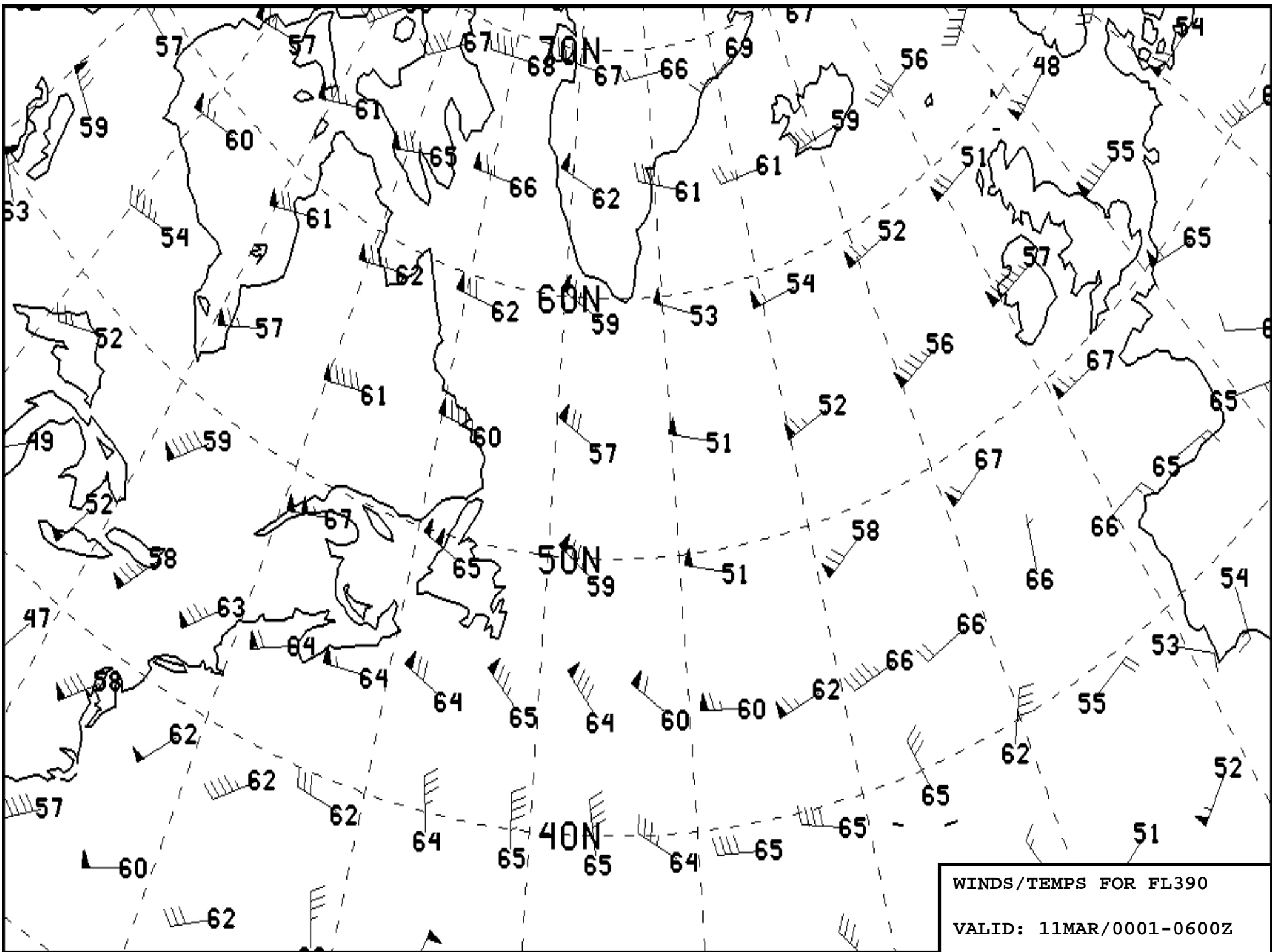
FRG UUA /OV FRG/TM 1513/FL010/TP H25B/TB LGT-MOD/RM LLWS +/-10KT 016-SFC DURD
RY14
FWN UA /OV SAX/TM 1516/FL070/TP DH8A/TA 02/WV 18046KT/IC NEG/RM IMC INTMT
PCPN
LOM UA /OV NXX225006/TM 1532/FL100/TP E145/TB MOD
KWRI UA /OV KWRI/TM 1538/FLUNKN/TP DC10/SK OVC013/WX RA/RM DURD CIG013-014
FRG UA /OV DPK/TM 1541/FL210/TP B737/TA M01/IC LGT RIME
KWRI UA /OV KWRI/TM 1549/FLUNKN/TP C17/SK BKN025-TOP150/WX RA/TB LGT/RM DURD
FM SIE-WRI
EWR UA /OV EWR220005/TM 1557/FL015/TP B737/TB LGT BLO 015/RM DURD
ACY UUA /OV ACY/TM 1558/FL010/TP A319/TB MOD/RM LLWS +/-10KT SFC-010 RY13 ACY
EWR UA /OV EWR/TM 1602/FLUNKN/TP UNKN/TB LGT-MOD/RM DURC 000-025 /TP ALL
EWR UA /OV EWR245015-EWR/TM 1627/FL050/TP B737/TB LGT CHOP
JFK UA /OV JFK170025/TM 1634/FL160/TP E135/TA 07/IC LGT RIME 160
SNC UA /OV MAD/TM 1641/FL100/TP B737/TB LGT/RM IMC
ACY UA /OV SIE216004/TM 1649/FL170/TP B737/TA M11/IC LGT RIME

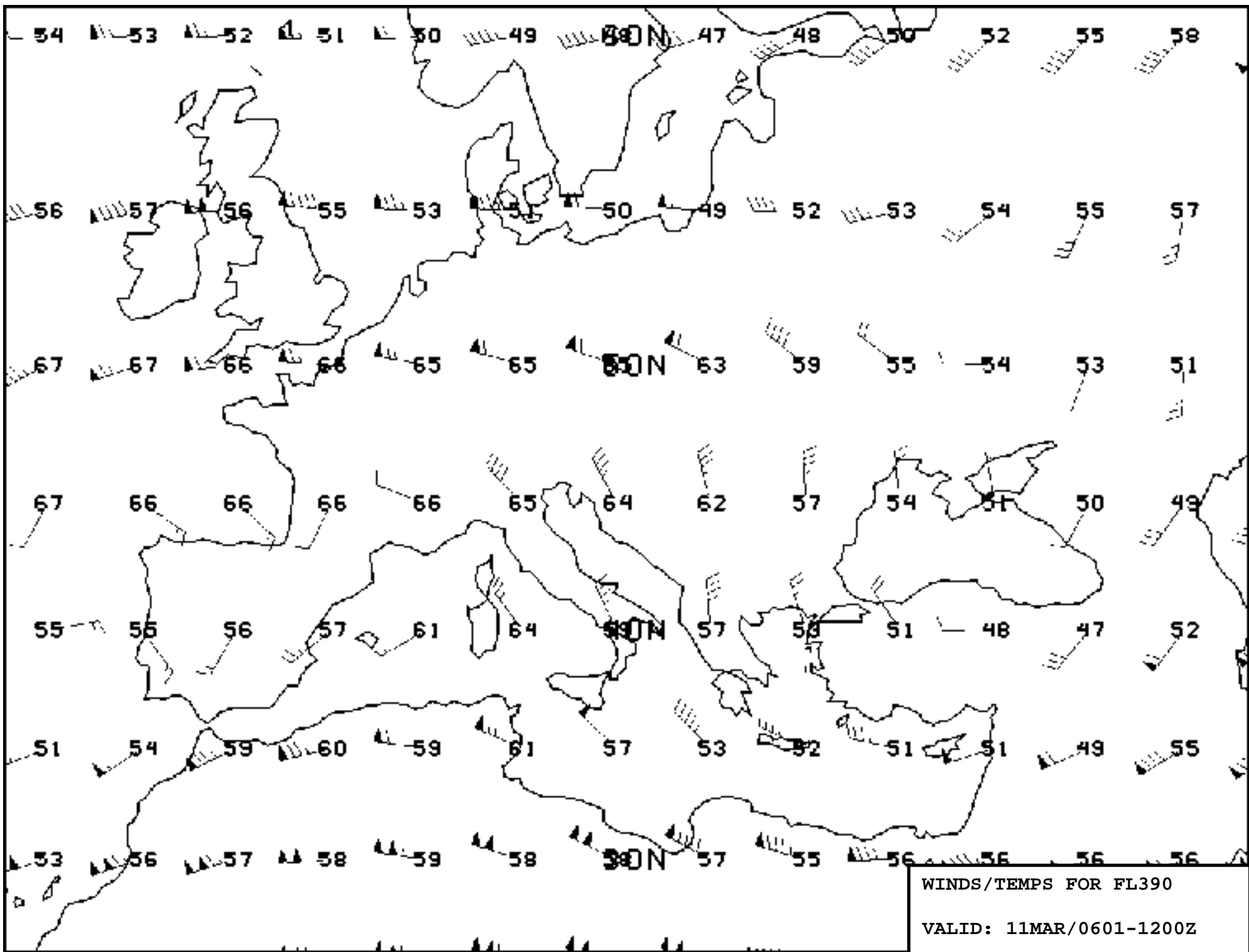
HAVE A GREAT FLIGHT!

THANK YOU/BEST REGARDS/JOE EDWARDS/COLT INTERNATIONAL HOUSTON









WINDS/TEMPS FOR FL390
 VALID: 11MAR/0601-1200Z